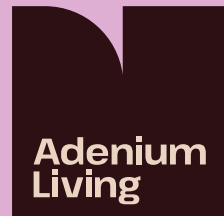


Move in to your new home in June 2025

ELIZABETH, SA



Specialist
Disability
Accommodation

High Physical Support

Located in Elizabeth, these Adenium Living houses are designed to incorporate a high level of physical access provision for people with significant physical impairment and requiring very high levels of support.

Custom built to Class 3 high level design both houses are ready to move in June 2025 with support provided by Claro Aged Care & Disability Services.

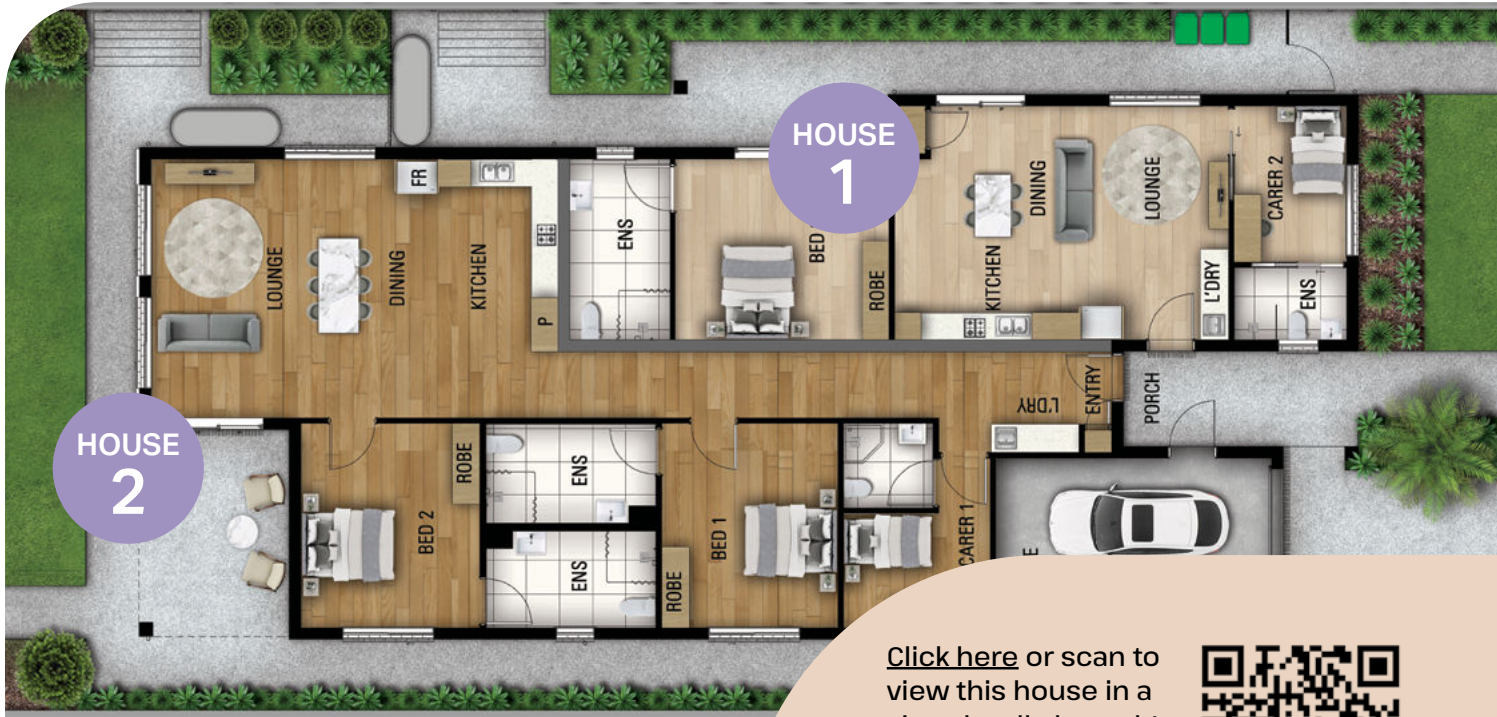
Houses feature:

- Contemporary facades
- Choice of wall colour in bedroom(s)
- Modern kitchen with adjustable kitchen bench
- Kitchen and laundry appliances
- Hard-wearing timber flooring
- Individual controlled air conditioning in bedrooms and living areas
- Built-in wardrobe with adjustable spaces
- Spacious, fully furnished living and dining area
- Accessible bathrooms and laundry
- Onsite Overnight Assistance (OOA) room with ensuite
- Ensuites to all bedrooms
- Outdoor undercover area
- Professional landscaping and garden maintenance
- Accessible clothesline
- Fire sprinklers
- Pet considered



Adenium Living cultivates beautiful, practical homes for long-term living - custom built homes that meet the specific needs and desires of the people living there.





Thoughtfully designed by Adenium Living for maximum independence and control.

Light, open and welcoming, these villas offer High Physical Support and Fully Accessible accommodation in Elizabeth, only 30 minutes' drive north of Adelaide.

The Adenium Living design features will empower you to live with maximum independence and choice.


These two Specialist Disability Accommodation (SDA) homes are custom-built by Adenium Living. They share a generous 710 square metre block, and with the option of one or two bedrooms, offer the choice of independent living or sharing a house with another person.

Only 400 metres from a major shopping centre and 900 metres to the closest train station, this house is ideally located for participant and provider to conveniently access shopping, dining and entertainment.

There are five medical centres within just a few minutes of this location, the closest only 350 metres from these houses. In addition, the Lyell McEwin and Calvary Central Districts Hospitals are both under 10 minutes by car.

[Click here](#) or scan to view this house in a virtual walk-through!

Or visit our website for more details and a full range of house options.



The area is well serviced, with police, a fire station and several disability services all within a short drive.

The closest green space is in walking distance and this home's location boasts another nine options for nearby parks and recreation areas, including an accessible public swimming pool.

- | | |
|--------------------------------------|--------------------------------------|
| House 1: | House 2: |
| 1 Bedroom | 2 Bedrooms |
| Ensuite to bedroom | Ensuites to bedrooms |
| 1 Onsite overnight support + ensuite | 1 Onsite overnight support + ensuite |
| 1 Accessible parking space | 1 Standard parking space |
| | 1 Accessible parking space |

If you are interested in this property, please contact us today. Our team is ready to answer your questions!

If you are looking for something different to suit your needs, we would love to offer help to find the right home for you.